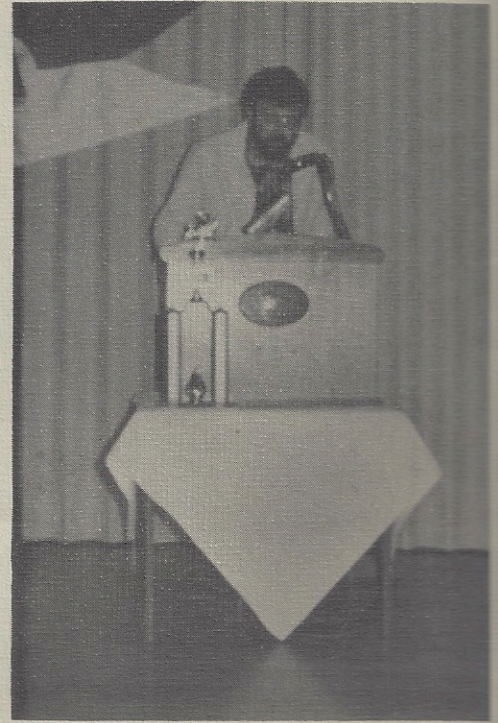
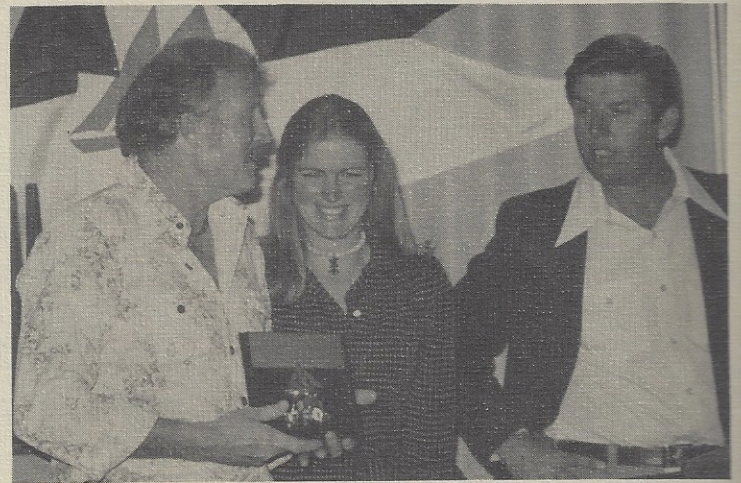
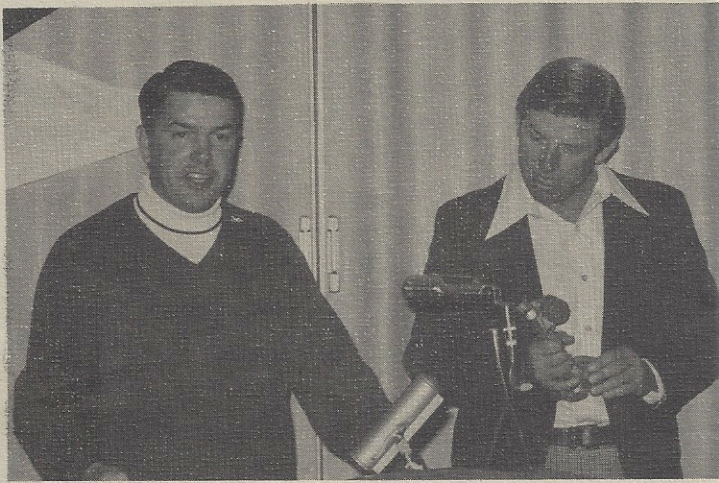


AL. HISLOP  
 1679 SUNSET CLIFFS BLV.  
 SAN DIEGO, CALIF. 92107

ANCIENT MARINERS SAILING SOCIETY  
 P.O. Box 80582 San Diego, Cal 92138

# ALTBARTROSS

February  
 1976



# MEETING

- Feb. 26            7:30 p.m. General meeting  
Corinthian Room  
John and Mary Knight, Hugo  
and Marj Carver. Showing  
slides on thier trip to Mexico.
- Feb.                Board Meeting will be  
announced at the general  
meeting. All board  
meetings are open to all  
AMSS members.
- March 6            Commodore Race & Raft-up
- May 1              Ancient Mariner Sailing  
Society's Annual May  
Regatta
- July 4              Race and Raft-up
- Aug.                Long Beach Ancient Mariner  
Race and cruise to Channel  
Island
- Oct. 3              Race and Raft-up at  
Glorietta Bay
- Dec. 4              Half-Pint-of-Rum Race
- Dec. 19            Xmas Parade of Lights

March 6th opens the new year with the Commodore's Race. Race starts off Point Loma at 10:00 sailing out to the Island, then a Raft-up by the Southwestern Yacht Club (La Playa Beach area). More details will be given by Bob Spriggs at the general meeting February 26. If you wish to go to the race but can't attend the February meeting, more information can be obtained from Bob Spriggs, Commodore - Phone 296-0682  
Ed Lewis - Vice Commodore  
Phone 286-7957

## The Christmas Parade of Lights

Surprise - the Ancient Mariners again won FIRST prize in the Parade of Lights. As is usual with our events the weather was against us. Saturday it rained and very little work was done while Sunday was just perfect for sailing; good wind and clear sky, but we had to work. Surprisingly, everything went very well and the only serious problems were popping the boat's circuit breaker and a bad string of lights in the display.

The entire shoreline was packed with thousands of spectators from the tip of Shelter Island down to the Star of India. Harbor Island provided an excellent position to view the panorama, particularly as the sprinkler system wasn't on this year.

Competition between the power boats was keen. Many different Santas were displayed, some had teams of reindeer and sleight while others had dolphin and dingy. The sail boats stayed with the old standby of arranging lights in the rigging.

Unfortunately, if you didn't participate in the parade or watch from shore, you missed a breathtaking spectacular. TV coverage was blacked out and only a few lines and a picture of the judges boat appeared in the paper.

At the awards ceremony the Commodore humbly accepted all awards and trophies (See Commodore's report for details).

in next issue

E. Lewis

P.S. The following leftovers are still in my truck:

Manila rope, lights - Pat  
Masking tape, black paint, card-board - Ernie  
Fifty three broken lights - Al  
Fifty foot power cord - ?

News letter of the  
ANCIENT MARINERS SAILING SOCIETY

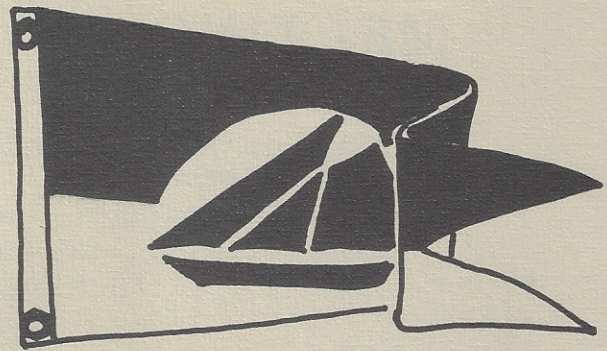
February 1976

Volume 2 Number 4

The AMSS held its first annual Installation of New Officers Banquet the evening of January 17th. The banquet was a huge success and proved to be a fun-filled evening for all 94 people that attended.

The festivities began with cocktails followed by a delicious buffet dinner prepared by Southwestern Yacht Club's Chef Gene. The good-humored speech-making was opened by Bob Driscoll, who gave our former Commodore, Doug Smith, a good roasting. After informing the audience of Doug's dubious character and what great things were not accomplished over the past year, Bob was ready to present the Commodore his awards. Doug received a beautiful framed certificate of non-achievement and an old, rusty roller skate that is to be affixed to the keel of "Aloha" to assist Doug on his many groundings.

Doug, regaining some decorum, got to the business at hand. He was able to present Sandy and Joe Minneya Keeper Trophy (a pen and ink sketch of "Kelpie" drawn by Bille Holle and framed by Kerry Geraghty) for "Kelpie's" first place finish in last years' regatta. Queen Mab won first in the sail division during the '75 Christmas Parade of Lights and her owner, Julio Garcia de Crespa, was presented with a plaque commemorating the event. Doug was most gracious and kept his farewell speech short, then introduced our new Commodore, Bob Spriggs.



Bob announced our new Board of Directors and asked us all for our help and support for the upcoming regatta on May 1st. Bob then turned the podium over to the final speaker of the evening, Tom Clemmons.

Tom said that he would like us to take a sentimental and nostalgic look back over the year. We were in a most proper mood and after he began, we were at first surprised and then started laughing hysterically. His speech was indescribable and after a list of incomprehensible words, the speech ended and everyone was left wondering: "What did he say?"

The light-hearted tone was set, the 7 piece Dixieland Band began to play and the people of the AMSS had a foot-stomping good time until the stroke of midnight.

S. Driscoll

#### WELCOME BACK

The Carvers and Knights are back from Mexico. They had a most pleasant cruise aboard Nirvana and went as far as Manzanillo. There will be much for them to share with all the members.

ABOUT OUR COVER

SUN & FUN

**THE ALBATROSS IS EAGER TO  
SHARE YOUR STORIES AND  
VIEWS WITH OUR READERS,  
PLEASE HELP.**

**EDITOR - E ARMSTRONG  
4158B MT ALIFAN PL S.D. 92111**

# YACHT OF THE MONTH

## GAZEKA

A gaff-rigged yawl, Gaseka was built in 1906 by Vancouver Shipyards for the Commodore of the Royal Vancouver Yacht Club, Vancouver, British Columbia.

Her planking is cedar over steamed oak frames and she has an iron keel. She carries 1100 sq. ft. of sail, is 41 feet on deck, 13.6 beam, has a 6 ft. draught and displaces 19 tons.

Gazeka was subsequently owned by two other RVYC commodores before coming to the United States under Seattle ownership in 1923.

Before the advent of the lighter boats and the now prevalent plastic production boats, Gazeka was active in racing circles and was two-time winner of the Lipton Cup. Because of her weight she is not a light-air boat but with any kind of wind she moves right out there and holds her own.

Gazeka was bought in 1969 by Roberta Erb and Josh Dean, who have enjoyed many cruising trips on her to Ensenada, the Channel Islands, Santa Barbara and as far north as Monterey.

Unlike the modern boats with their touch of teak trim here and there, the sides of Gazeka's deck-house are one continuous piece of teak 20 ft. long by 1-1/2 ft wide by 2 inches thick. Even her refrigerator has solid mahogany doors with bronze hinges and latches.

In the course of her active 70-year-life, Gazeka has had eight owners, several of whom took the lazy-man approach and painted her beautiful teak and Honduras Mahogany bright work a variety of wild colors. Over the past three years, Roberta and Josh have spent countless hours scraping and sanding her down to her original woods and restoring her cosmetically.

This seemingly endless project finally is beginning to pay off in completed visual evidence and they expect to wind it up by the first of February. She's being fitted with new sails, so the rest of you Ancient Mariners take warning! Gazeka'll be ready to give 'em hell.

Roberta Erb

## CRUISE

Harry Steward made his cruise to Heva Oa in 33 days aboard his gaff sloop, the Islander, and is now awaiting a new job before continuing his journey.

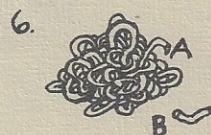
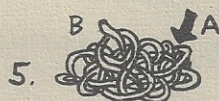
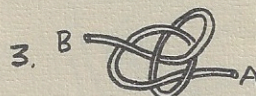
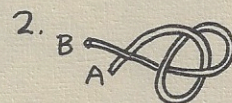
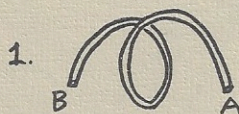
## WELCOME ABOARD

Phil Young  
28' sloop "JAMBOREE"

Paul and Sandi Mitchell  
58' schooner "WHITE CLOUD"

### TYING THE NUDO DEL DIABLO OR DEVIL'S KNOT

BY  
JOHN CORCORAN

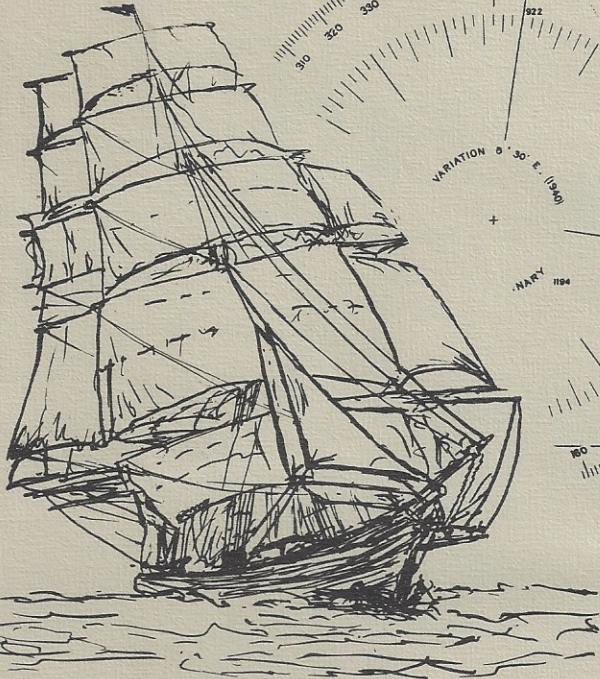


(CONTINUED NEXT WEEK)

CONVERSION TABLE  
FEET TO METERS

Feet	Meters	Feet	Meters	Feet	Meters
1	.3	21	8.4	41	12.5
2	.6	22	8.7	42	12.8
3	.9	23	7.9	43	13.1
4	1.2	24	7.3	44	13.4
5	1.5	25	7.6	45	13.7
6	1.8	26	7.9	46	14.0
7	2.1	27	8.2	47	14.3
8	2.4	28	8.5	48	14.6
9	2.7	29	8.8	49	14.9
10	3.0	30	9.1	50	15.2
11	3.4	31	9.4	51	15.5
12	3.7	32	9.8	52	15.8
13	4.0	33	10.1	53	16.2
14	4.3	34	10.4	54	16.5
15	4.6	35	10.7	55	16.8
16	4.9	36	11.0	56	17.1
17	5.2	37	11.3	57	17.4
18	5.5	38	11.6	58	17.7
19	5.8	39	11.9	59	18.0
20	6.1	40	12.2	60	18.3

CAUTION  
Considerable shoaling is reported  
in the harbor with a least depth  
of 18 feet in the entrance (1953)



# ENGLISH HARBOR

Observation Spot • Lat. 3° 51' 23" N. Long. 159° 21' 60" W.  
H.W.E.C. Vih. 15 m. Springs rise 2 ft. Neaps range 6 in.

