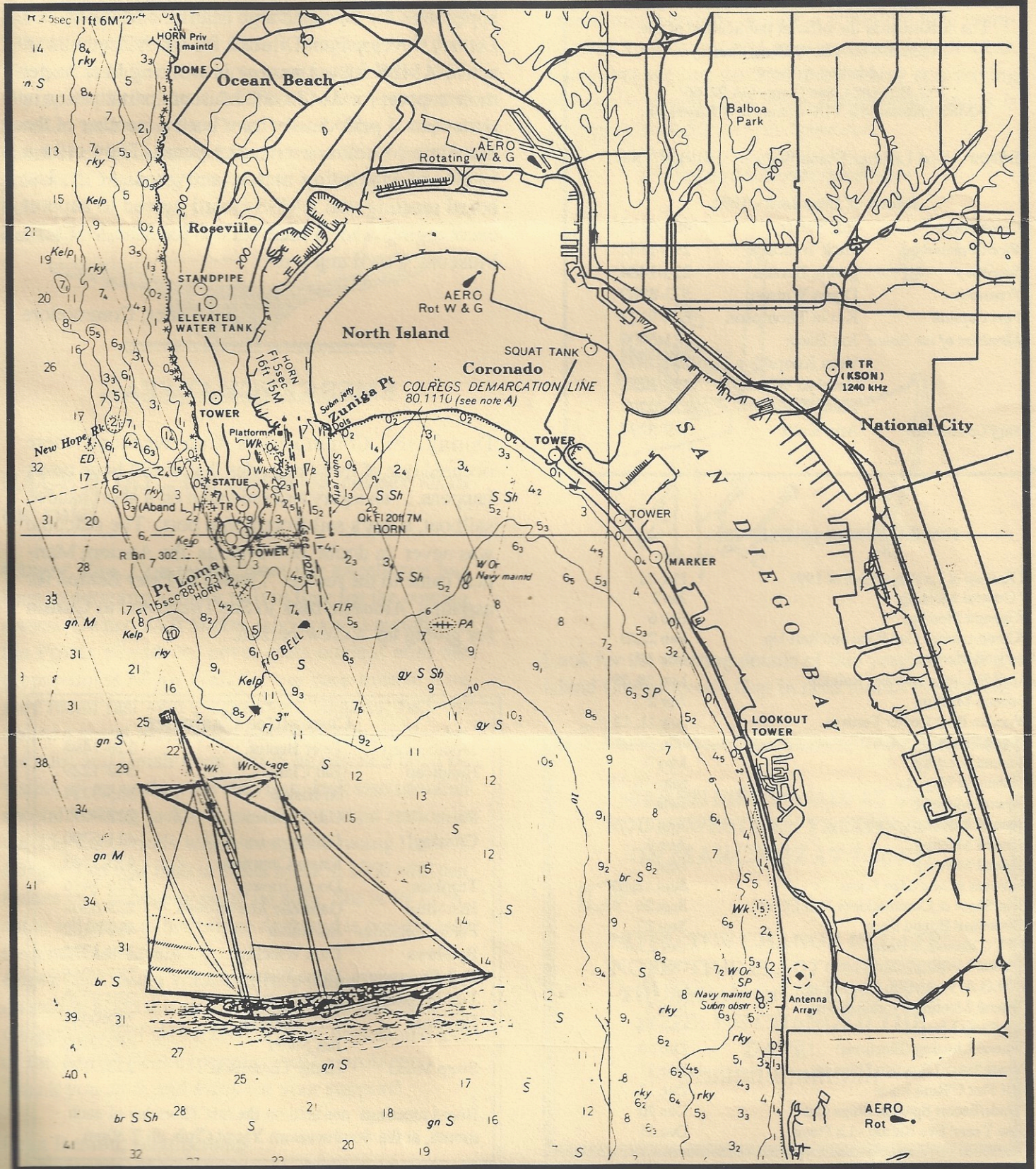
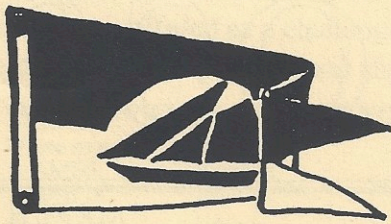


ALBATROSS

ANCIENT MARINERS SAILING SOCIETY

MARCH 1992





The Albatross is the official publication of the
Ancient Mariners Sailing Society.

Mailing Address:

P.O. Box 6484, San Diego, CA 92166

AMSS Ship-to-Ship VHF Common - Channel 68

Editors Rod Latimer/Diana Watson (619)287-9066

Board of Directors - 1992

Commodore	Jim Sutter	481-0102
Vice Commodore	Dick Winchip	298-1732
Secretary	Leslie Benton	226-1484
Treasurer	Diana Watson	573-8289
Port Captain	Kevin Thompson	222-9123
Members of the Board	Jon Bates	421-6700
	Vern Koepsel	297-7973
	Gerelyn Winchip	298-1732
	Dawn Miller	225-0297
Staff Commodore	Ann Kolls	569-5277

1992 CALENDAR OF EVENTS

✓Raft up at La Playa- End of 1991	Dec 31
✓General Meeting	Jan 2
✓General Meeting	Feb 6
✓Commodore's Cup Race and Raft Up	Feb 22,23
✓General Meeting	Mar 12
✓April Fools Regatta and Raft Up	Mar 28, 29
General Meeting	Apr 2
Wooden Boat Center Festival	Apr 11, 12
Spring Swap Meet	May 2
General Meeting	May 7
Yesteryear Regatta	May 16, 17
General Meeting	June 4
General Meeting (picnic)	July 2
General Meeting	Aug 6
General Meeting	Sept 3
Petticoat & Iron Man Races	Sept 12, 13
Boat Show & Commodore's Ball CCYC	Sept 26
Homeward Bound Race	Sept 27
SWYC Ensenada Race	Oct 2,3,4
General Meeting (2nd Thurs)	Oct 8
W.H.O.A. vs AMSS (Dana Cup)	Oct 17
General Meeting (Nominations)	Nov 5
Fall Swap Meet	Nov 14
General Meeting (Elections)	Dec 10
Parade/Escort Spanish Ships In	Dec 11
Half Pint O'Rum Race	Dec 12
Parade/Escort Spanish Ships Out	Dec 20
New Years' Eve Raftup - La Playa	Dec 31

From the Helm

Enclosed is an information flyer and membership application for the San Diego Maritime Museum. *Joe Dittler*, Development Director for the Museum is an active AMSS supporter. *Joe* is working hard to get more support for AMSS and Museum participation in our events. I periodically have been a member of the Maritime Museum over many years, They offer a variety of interesting marine activities. At the last board meeting, the AMSS Board agreed to support encouraging AMSS members to join the Maritime Museum. You'll enjoy it!

Jim Sutter, Commodore

EMERGENCY AT SEA

During the Commodore's Cup weekend there occurred one of those episodes that we all hope never happens. . . an injury to a crewman on a short handed sailboat, a day's sail from home port. The outcome was never in doubt, however, as the Ancient Mariners came to the rescue. Thanks to *Peter Benton* for assisting *Alouette* back to San Diego and to *Gamin* for giving up a crew person.

Committee Chairmen

Membership	Peter Benton	226-1484
Handicap	Bill Clark	542-1229
	Al Hislop	565-9214
Race	C.F.Koehler	222-9051
Cruising	Jon Bates	421-6700
	Krista Champion	435-3643
Trophies	Doug Graves	226-3446
Historical	Gabrielle Martin-Neff	223-6502
Public Relations	Jim Sutter	481-0102
Bye-laws	Dick Winchip	298-1732
Data Processing	Diana Watson	287-9066
T-Shirt Sales	Mark Szczecina	238-9770
Directory	C.F. Koehler	222-9051
	Jim Sutter	481-0102
Swap Meets	Kathy Thompson	223-9123

Board meetings are held on the last Thursday of each month, at the Southwestern Yacht Club at 7.30pm.

MEMBERSHIP

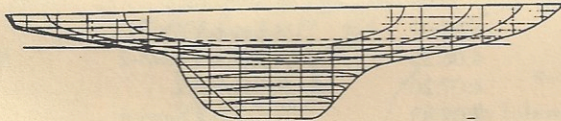
Membership Petition:

Yacht: Fantasy

Owner: Tracy Wolfe

Fantasy is a 5.5 meter, one design racer built in Sweden in 1951. She is constructed of Mahogany, has wooden spars and has dimensions of 32'LOA by 23'LWL by 5'beam by 5'draft weighing 4000lbs. The boat is believed to have been built for the 1952 Olympics. Sailed by Lars Thorn, she represented Sweden and won the Gold Medal. She is a past member of the Ancient Mariners and Tracy is in the process of restoring her back to her original condition.

Fantasy is sponsored by *C.F. Koehler* and *Jim Sutter*



RACE BOAT... the exception rather than the rule!

Ginger Too, Committee Boat par excellence has been undergoing a major refit in time for the coming season. Owner, *Jack Sutton*, who is also a member of the Power Squadron, never rests content with the preparedness of his craft for our race events. You may recall last year's Yesteryear Regatta, Jack installed a signal mast on the quarter of **Ginger Too** for the start and finish flags which he insisted must be visible all around on the start line. Jack also installed special holding tackle to exactly maintain station in the 25+ knot winds which swept the racing fleet.

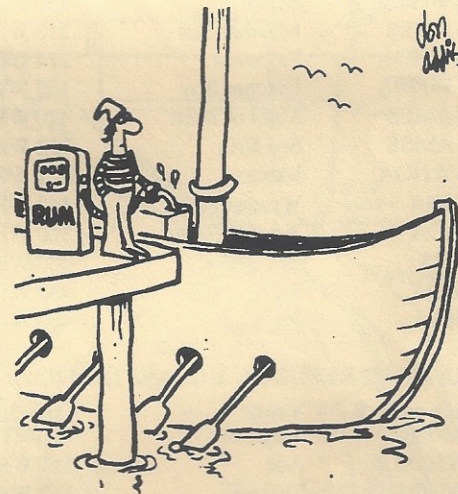
Ginger Too was built in Costa Mesa in 1960 with oak frames and mahogany plank on edge. She is 46' LOA, some 14' beam at her bridge deck and is powered by twin marine diesels.

Capt'n Jack and a volunteer race committee will be on station again this year to monitor the AMSS races. **Ginger Too** will also control a chase boat should any of the AMSS fleet experience traffic problems. Thank you *Jack* and *Patty* for your support!

Peter Benton, Membership

LAST ALBATROSS?

If you haven't paid your dues yet for 1992, this is a friendly reminder to send them in. If your Albatross mailing label has a "91" on it, we have not yet received your dues. Please don't let your membership lapse, we need every member we have! The By Laws say lapsed memberships require a complete new membership application and new membership process. Sorry, but we just can't afford to carry non-paying members. If you think your membership status is wrong,, please contact the treasurer.



Look for the exciting details of this year's around the island Commodore's Cup in next month's Albatross

**MARCH MEETING IS AT THE
SOUTHWESTERN YACHT CLUB
ON MARCH 12 AT 7:30 PM**



**NOTE: THE CHANGE IN DATE!
NOTE: THIS IS NOT THE FIRST
THURSDAY OF THE MONTH!
NOTE: WE CHANGED THE
DATE!**

!!!!!!!!!!!!!!!!!!!!!!!!!!!!!!

The following are race results from the Dana Cup weekend sponsored by the Wooden Hull Owners Association. The Dana Cup was offered as a challenge to AMSS to compete against the WHOA boats. Several boats showed up to represent AMSS. We gave a good showing but left the Cup behind.

WHOA ANNIVERSARY RACE-NEWPORT BEACH TO DANA PT.-17.5 KMI - OCTOBER 5, 1991

Place overall	Yacht	Handicap	Elapsed Time	Corrected time	Place in Class
1-AMSS	Virginia	120 WHOA	3:41:49	3:06:49	A Sloops-1
2-WHOA	Ace	132 WHOA	3:48:24	3:09:54	A Sloops-2
3-WHOA	Spartan	174 WHOA	4:08:06	3:21:03	A Sloops-3
4-WHOA	Tantalus	168 WHOA	4:06:54	3:17:54	A Sloops-4
5-WHOA	Stella Maris	162 WHOA	4:08:18	3:21:03	A Sloops-5
6-WHOA	Tantara	162 WHOA	4:09:15	3:22:00	A Sloops-6
7-WHOA	Debra	150 WHOA	4:06:11	3:22:26	A Sloops-7
8-WHOA	Kona	298 WHOA	4:49:53	3:22:58	B Ketch&Yawl-1
9-WHOA	Osprey	129 WHOA	4:04:13	3:26:21	A Ketch&Yawl-1
10-WHOA	Shalimar	204 WHOA	4:26:37	3:28:07	B Ketch&Yawl-2
11-WHOA	Altair	300 WHOA	4:57:28	3:29:58	B Sloop-1
12-WHOA	Arcady	258 WHOA	4:46:18	3:31:03	Schooner-2??
13-WHOA	Kelpie	96 WHOA	4:06:40	3:38:40	Schooner-1??
14-WHOA	Slipaway	144 WHOA	4:29:29	3:47:28	A Sloops-8
15-WHOA	Bravo	150 WHOA	4:32:31	3:48:46	A Sloops-9
16-AMSS	Malabar Star	210 WHOA	5:00:23	3:59:08	B Sloops-2
17-WHOA	Fairwind	214 WHOA	5:07:32	4:05:07	B Ketch&Yawl-3
18-WHOA	Butcher Boy	162 WHOA	4:53:40	4:06:25	A Ketch&Yawl-2
19-AMSS	Maid of Kent	420 WHOA	6:09:57	4:07:20	Schooner-3
20-AMSS	Sea Brig	312 WHOA	5:40:43	4:09:43	B Ketch&Yawl-4
21-WHOA	Manana	222 WHOA	5:34:15	4:29:30	B Sloops-3
WHOA	Windwave	162 WHOA	5:26:16	4:39:01	A Sloops-10
WHOA	Spanish Rake	360 WHOA	DNF		Ketch&Yawl
AMSS	Revelee	480 WHOA	DNF		Ketch&Yawl
WHOA	Puff	480 WHOA	DNF		Schooner
WHOA	Voyager	480 WHOA	DNF		B Ketch&Yawl

DANA CUP RESULTS- A CLASS 11.56 KMI. -OCTOBER 6, 1991

Place overall	Yacht	Handicap	Finish Time	Corrected time	Place in Class
1-AMSS	Virginia	120 WHOA	2:09:05	1:40:58	Sloop-1
2-WHOA	Ace	150 WHOA	2:18:48	1:44:54	Sloop-2
3-WHOA	Tantara	162 WHOA	2:23:40	1:47:27	Sloop-3
4-WHOA	Slipaway	144 WHOA	2:24:16	1:51:31	Sloop-4
5-WHOA	Osprey	129 WHOA	2:22:07	1:52:16	Ketch&Yawl-1
6-WHOA	Tantalus	168 WHOA	2:29:43	1:52:21	Sloop-5
7-WHOA	Stella Maris	162 WHOA	2:33:17	2:02:04	Sloop-6
8-WHOA	Spartan	180 WHOA	2:37:03	1:57:22	Sloop-7
9-WHOA	Bravo	150 WHOA	2:36:14	2:02:20	Sloop-8
10-WHOA	Butcher Boy	162 WHOA	2:40:38	2:09:25	Ketch&Yawl-2
11-AMSS	Southern Star	156 WHOA	2:44:30	2:09:27	Sloop-9
12-WHOA	Windwave	162 WHOA	3:05:14	2:29:01	Sloop-10
13-AMSS	Tempest	152 WHOA	3:04:14	2:30:20	Sloop-11

DANA CUP RESULTS- B CLASS 5.78 KMI - OCTOBER 6, 1991

Place overall	Yacht	Handicap	Finish Time	Corrected time	Place in Class
1-WHOA	Altair	300 WHOA	1:21:00	0:54:06	Sloop-1
2-WHOA	Kona	298 WHOA	1:25:42	0:57:00	Ketch&Yawl-1
3-WHOA	Kelpie	96 WHOA	1:10:10	1:00:55	Schooner-1
4-WHOA	Manana	222 WHOA	1:27:07	1:05:44	Sloop-2
5-AMSS	Alouette	258 WHOA	1:32:58	1:08:07	Ketch&Yawl-2
6-WHOA	Arcady	258 WHOA	1:38:10	1:13:19	Schooner-2
7-WHOA	Puff	480 WHOA	1:59:57	1:13:43	Schooner-3
8-WHOA	Fairwind	214 WHOA	1:37:16	1:16:39	Ketch&Yawl-3
9-AMSS	Maid of Kent	420 WHOA	1:57:35	1:17:07	Schooner-4
10-AMSS	Sea Brig	312 WHOA	1:47:24	1:17:21	Ketch&Yawl-4
11-AMSS	Toco	204 WHOA	1:37:04	1:17:25	Ketch&Yawl-5
12-WHOA	Shalimar	204 WHOA	1:41:01	1:21:22	Ketch&Yawl-6
13-WHOA	Spanish Rake	360 WHOA	2:01:4 2	1:27:01	Ketch&Yawl-7
14-AMSS	Malabar Star	210 WHOA	1:47:22	1:27:08	Sloop-3
15-AMSS	Revelee	480 WHOA	2:17:24	1:31:10	Ketch&Yawl-8