

Ancient Mariners Sailing Society  
 P.O. Box 6484, San Diego  
 California, 92106



AL HISLOP  
 1890 LINBROOK  
 SAN DIEGO, CA. 92111

# SAN DIEGO BAY CALIFORNIA

From a Trigonometrical Survey  
 under the direction of A.D.BACHE Superintendent of the  
**SURVEY OF THE COAST OF THE UNITED STATES**  
 Triangulation by R.D. CUTTS Asst  
 Topography by A.M. HARRISON Sub-Assistant  
 Hydrography by the Party  
 under the command of Comdr. JAMES ALDEN U.S.N. Asst.  
 Scale 46000  
 1857

### SAILING DIRECTIONS

Point Loma and the Coronado Islands form good landmarks for the entrance to the Bay. The Kelp beds which extend from False Bay along the land to and three miles beyond Pt. Loma, will serve as a good guide in thick weather. Vessels in entering the port may pass through the Kelp off the point, from the eastern edge of which steer N.E. N. 75° E. till up with Pt. Loma, the bar having been crossed when there is 22 feet at mean low water and having, one half of the village on the Plaza open past Ballast Point, haul up and steer in that direction N.W. 1/4 N. 1/4 W. to the anchorage.

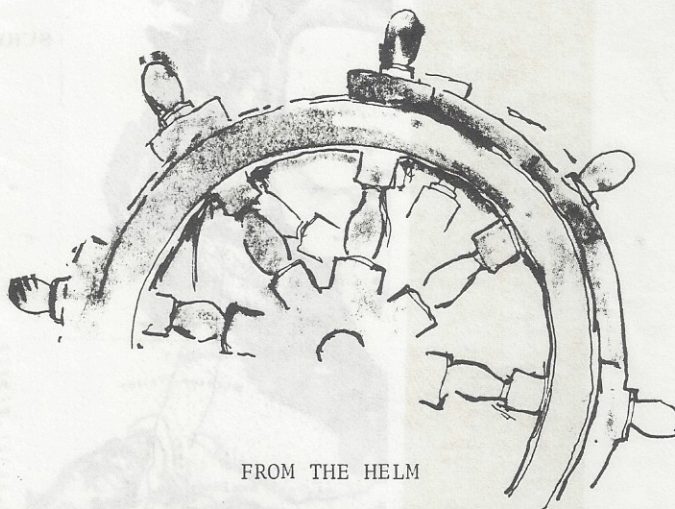
In hoisting while standing to the Eastward, do not approach the Zuniga Shoal too close as it is very abrupt, but to the Westward where the water shoals very gradually the bar will be a sufficient guide. Between Ballast Pt. and the Village there is a shoal with 12 feet of water on it at mean low tide, but being out of the channel it is no obstruction except to vessels of heavy draft working to windward. Beyond the Plaza the Channel is clearly marked at low water and its limits are more or less defined at any stage of the tide. Round into San Diego from the Northward, care must be taken not to mistake False Pt. for Pt. Loma, as they resemble each other, particularly when the weather is hazy. There is nothing more than a boat channel at the entrance of False Bay, and that is impracticable except in very smooth weather.



# ALBERT ROSS

BOARD MEMBERS - 1980

Commodore:	Paul Mitchell	226-1133
Vice Commodore:	Mike Williams	291-3675
Secretary:	Tom Belair	286-2470 453-6566
Treasurer:	Sandra Franks	225-0630
Members:	Bill Clark	297-2795
	Steve Flanagan	224-2121
	Chris Frost	442-2533
	Mike Lewis	223-5154
	Lonnie Lynch	226-8159



FROM THE HELM

CALENDAR OF EVENTS

Saturday Jan. 19	Commodore's Cup Race
Saturday Jan. 26	Commodore's Ball
Thursday Feb. 7	General Meeting (Silver Gate YC)

PROGRAM REPORT

Our next regular meeting will be in February, when we will have a premiere of a film that was generously donated to the Society by Steve Luckman, owner of the schooner REVENGE. The film is on the construction of the replica of the schooner AMERICA and the re-enactment of the race that brought the America's Cup here originally. For the original race, AMERICA crossed the Atlantic to race for bets against the British yachting fleet. The wary British wouldn't put up any cash, so AMERICA came home with a silver cup that had a hole in the bottom.

As I sit down to write the first of twelve articles "From The Helm", I find myself thinking of the year ahead, and of all the Ancient Mariners' years past. I have followed the club closely from the very beginning, and have seen a sparkling idea in the minds of a few individuals seated around breakfast at the Red Sails Inn turn into the best and most active group of its kind on the West Coast. When someone says to me, "I am looking around for an old wooden boat to buy so I can join the Ancient Mariners", I know we have arrived. And I have heard this same remark several times.

I am proud to be your Commodore and I am also excited. We have a fantastic year ahead of us. We have the support of a great Board of Directors. At our last Board meeting we had nearly as many members present as we did at our last general meeting, including two past Commodores. There is a tremendous amount of interest and enthusiasm right now, and our season hasn't even started yet.

We're going to kick off the season with a bang -- on January 26th! Save that Saturday night for the COMMODORE'S BALL -- and it will be a ball! The Shelter Island Inn is setting up their Marina Room for us with one of their renowned buffet dinners; we will have music and dancing and a joyful time. This year we are asking you all to come dressed from the period that your boat was either designed or built. From flappers to zoot suits we're going to have a great time! Dinner will be limited to 80 people, so get your reservations in early. After dinner, the dance will be open to all. What a nice way to do our January meeting!

Also, on January 19th we will have the annual Commodore's Cup Race around the Coronado Islands, with awards at the Commodore's Ball. I could go on and on about the upcoming events: The San Clemente Cruise, the Mission Bay Race, the Ensenada Race, the preparations for the next Hawaii Race, and our own great Spring Regatta in June.

Let's give our thanks to the folks whose efforts in the past have given us what we are today: Thanks to Al, Trudy, Bill, Doug, Hugo, John, Bob, Mike, Sam, Tom, Steve, and all the others.

And to each of you -- have a great holiday and a fine New Year.

Paul Mitchell

## CHRISTMAS PARADE OF LIGHTS

One recent chilly Sunday, as over 100 area boats were preparing for the annual Christmas Parade of Lights, a minor crime wave swept the country.

During the first event of the day, most were sleeping, impervious to the gentle rattle of colored bulbs against rain gutters as their Christmas lights were being stealthily removed. There was a record number of Honda generators reported stolen by noon.

Sundown brought a collective roar of generators and cheers of delight as the harbor lit up with Christmas lights. A brilliant stream of light began snaking past the STAR OF INDIA, much to the delight of thousands on shore.

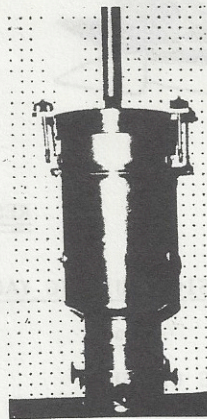
The Ancient Mariner's entry for the parade this year was put together by our new Commodore Paul in his flagship WHITE CLOUD. Through the frantic efforts of Paul securing lights, generators and dolphins, and Susan, who can man the hors d'oeuvres as well as she trims a sail, and thanks to the efforts of Ron Baccardi, all on board enjoyed a feeling of Christmas warmth!

At evenings end, before we departed, we all moved up the dock together and turned to gaze at the spectacle before us. The generators still hummed, pouring life into the giant shooting star rising above two Christmas trees.

Though one and all were hoarse from yelling, before leaving her to her silvery dolphin escort, we all indulged in one last cheer:

"Merry Christmas WHITE CLOUD!"

There will be a flyer sent out the first week in January with all information pertaining to the Commodore's Cup Race and the Commodore's Ball. If you have any questions now, contact Paul Mitchell about the Ball and Mike Williams about the Race.



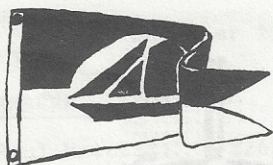
FOR SALE -- EXCELLENT CONDITION --  
WORKS WELL -- \$150.00 --

A "Pansy" Mk. III Charcoal Burning Cabin Heater, stainless steel.  
Dimensions: Height o/a 18½", diameter of heater body 7", projection o/a 10½". Weight complete 18 lbs.  
Heat output: Minimum 3,000 B.T.U.s/hour, or ¾ Kw. Burning time, on low fire, about 6/8 hours.

ALSO --

An Atkin "Pinky" dinghy, 7'2" for \$200.00.

Contact Tom Clemmons



RESULTS OF 6TH ANNUAL HALF PINT O' RUM RACE

CLASSIC CRUISING YACHTS:

<u>Name</u>	<u>Corrected Time</u>	<u>Elapsed Time</u>
WHITE CLOUD	2:09:39 *	3:03:51
SALUD	2:12:10	2:51:58
MIGAN	2:22:42	2:55:11
ROWDY	2:28:33	2:58:38
CUTTER	2:51:24 *	4:49:44
WINDSONG	3:02:13	3:27:00
MANUKAI	3:32:36	4:05:05
ARTEMIS	3:44:08	4:16:37
VIKING	DNF	
SEA WITCH	DNF	
SEA CLOUD	DNF	
TUMBLEHOME	DNF	
POPPY	DNF	
ANTIGUA	DNF	
STYRKE	DNF	
SPRAY	DNF	

CLASSIC RACING YACHTS:

NIRVANA	1:26:44 *	3:07:00
WHISPER	1:54:39	3:26:00
ALOHA	DNF	
TOMAHAWK	DNF	
MERRY LASS	DNF	

\* Includes 10% discount for correct answer to quiz question.