

# SAN DIEGO BAY CALIFORNIA

From a Trigonometrical Survey  
under the direction of A.D. BACHE Superintendent of the  
**SURVEY OF THE COAST OF THE UNITED STATES**  
Triangulation by R.D. CUTTS Asst.  
Topography by A.M. HARRISON Sub-Assistant  
Hydrography by the Party  
under the command of Comdr. JAMES ALDEN U.S.N. Asst.

Scale 463000

1857

### SAILING DIRECTIONS

*Pt. Loma and the Caraculus Islands form good landmarks for the entrance to the Bay. The Kelp which extends from Balise Bay along the land to and three miles beyond Pt. Loma, will serve as a good guide in thick weather. To sail in entering the port may pass through the Kelp off the point, from the eastern edge of which steer N 1/2 E N 1/2 E all up with Pt. Loma, the bar having been crossed when there is 22 feet at mean low water; and having, say half of the sillage on the Plaza open past Ballast Point, haul up and steer in that direction S W 1/4 W N 1/2 W to the anchorage.*  
*In tacking while standing to the Eastward, do not approach the Zuniaga Shoal too closely as it is very abrupt, but to the Westward, where the water shoals very gradually the bar will be a sufficient guide. Between Ballast Pt. and the Village there is a shoal with 12 feet of water on it at mean low tide, but being out of the channelway it is no obstruction except to vessels of heavy draft working to windward. Beyond the Plaza the Channel is clearly marked at low water, and its limits are more or less defined at any stage of the tide.*  
*Bound into San Diego from the Northward, care must be taken not to mistake Balise Pt. for Pt. Loma, as they resemble each other, particularly when the weather is hazy. There is nothing more than a boat channel at the entrance of Balise Bay, and that is impracticable except in very smooth weather.*

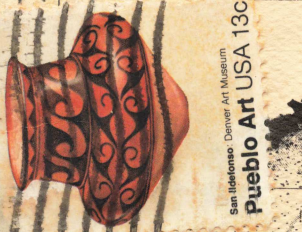
MARJORIE & HUGO CARVER  
2040 HARBOR ISLAND DRIVE  
SAN DIEGO, CA. 92101

Ancient Mariners Sailing Society  
P.O. Box 6484, San Diego  
California, 92106

# ALBERT ROSS

MAY

1978



San Dieguito, Denver Art Museum  
Pueblo Art USA 13C





The ALBATROSS is the official publication of  
ANCIENT MARINERS SAILING SOCIETY of San Diego

ALBATROSS Vol. V No. 5 May 1978

Send articles to Editor M. Carver at  
2040 Harbor Island Drive, San Diego, Ca. 92101

FROM THE HELM



1978 OFFICERS

COMMODORE Bill Clark 297-2795;  
VICE COMMODORE Paul Mitchell 226-1133  
SECRETARY Al Hislop 565-9214  
TREASURER Sam Mangum 224-1254

BOARD MEMBERS---

Tom Clemmons 224-9758; John Frost 282-0758  
Ed Lewis 286-7957; Trudy Wood 277-4965

Board meetings are held on the first  
Thursday of each month 7:30 PM at  
Southwestern Yacht Club. All members  
are welcome.

CALENDAR OF EVENTS

May 25 General Meeting

June 22 General Meeting

June 24/25 Bay Regatta and  
San Diego to Maui Race

July 19 \*\*\* Luau in Maui \*\*\*

July 27 General Meeting

August 5 or 6 Schooner Race  
in Long Beach

August 31 General Meeting

September ?? Cabrillo Landing  
Regatta

September 28 General Meeting

October 26 General Meeting

October 28/29 Halloween Raft Up

December 2/3 Half Pint 0' Rum  
Race & Raft Up

December 17 Christmas Parade  
of Lights



The remaining weeks in May to the June  
first deadline for the Maui Race will produce  
the remainder of the fleet which now numbers  
eleven. The final number is expected to reach  
from fifteen to twenty boats, which is a great  
turn-out for the first running of this long-  
distance ocean event.

For those of you who don't think we have  
started something, there is quite a good number  
of boats already planning for the 1980 running  
of the race to old Maui. Plan to be there.

Smooth Sailing

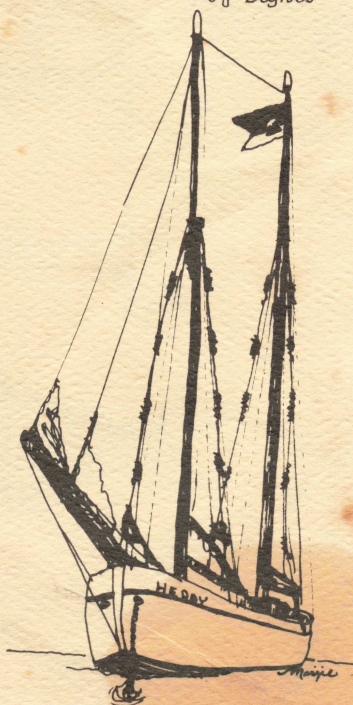
Bill Clark



RACE RECAP

Sunday, the seventh of May, was a beautiful  
day for a sail, as was found out by Windsong,  
Sonden, Migan, Rampant, Sunshine, and Maribel,  
who participated in a non-scheduled "Round The  
Bridge Race". The order of finish was Maribel,  
Sunshine, Rampant, although Maribel was disqualified  
for holding. Migan and Sonden dueled to the  
bitter end, with Sonden finishing a neck ahead.  
Windsong was last seen heading west into the  
sunset, having blasted down the bay with a  
strange ancient spinnaker.

The only mishap reported was on board the  
Sunshine, when "Sugar" who was working the  
foredeck, fell overboard. According to racing  
rules, you must finish with all of the crew  
you started with, so Sunshine was forced to  
circle and recover the clumsy crew member.





Welcome to the new members accepted in

May. They are:

SEA BRIG H-28 Paul and Mary Brower  
TRADITION Eric ketch Mick and Pat McGuire  
SEA FORTH Seawitch ketch Al and Joan Cox  
ECLIPSE Seawitch ketch Ann Brownfield

Now that the "official" start of yachting season is upon us, the time for the Yester'year Regatta is swiftly approaching. This Regatta promises to be doubly exciting, with both a Bay Race, and a long race to Maui.

The course for the Bay Race will be the same as last year's, starting and finishing off the Reuben E. Lee. Course markers this year will be designed to withstand the abuse of Ancient Mariners in hot pursuit of elapsed time records.

A regatta entry form has been enclosed with your ALBATROSS just in case you have lost the one sent to you earlier. We would like to receive your entries for the Bay Race by June 10 to allow the handicappers time to adjust classes and start times. Don't forget to indicate the number of people expected for breakfast and dinner at Southwestern Yacht Club.

Yester'year Regatta Tee shirts are on sale at Pacific Marine Supply. More small and extra large sizes have been ordered, so all sizes should be on hand by the time you read this.



### Rolling Down to Old Mau-ee

Tis a rough, tough life of toil an' strife,  
we whale-men un-der go, We  
don't give a damn when the gale is done, how  
hard the winds do blow, We're home-ward bound, 'tis a  
damn fine sound, with a good ship taut an'  
free---, We don't give a damn when we drink our  
rum, with the girls of old Mau-ee. Roll-ing  
down to old Mau-ee, me boys, Roll-ing down to  
old Mau-ee---ee, We're home-ward bound from the  
Arc-tic ground, Rolling down to old Mau-ee!

#### MORE WILLING CREW FOR HAWAII !!

Alan Olschewski & wife (Ute)

Own's a Catalina 27  
Members of SWYC  
Solana Beach -- 755-0609

Terry Cook & Ronnie Beltlee

Sturdy crew in their early 20's  
Terry sailed last year to Hawaii on  
an Islander 32.

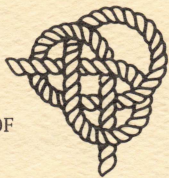
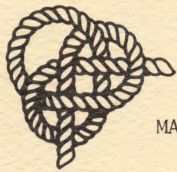
6675 A Sabado Tarde  
Goleta, Ca. 93017 1-805-968-8675

Local contact: (their Mother)  
4466 Granger

San Diego, Ca. 92107 222-3523







MAUI RACE ENTRIES AS OF

MAY 8, 1978

IRENA

32' Hanna Gaff Ketch  
Sam & Irene Mangum

HELAINÉ

42' 6" Stone Cutter  
Michael Lewis

PACIFICA

48' Sparkman & Stevens Yawl  
Jack Frost

ECLIPSE

31' 6" Angelman Gaff Ketch  
Ann Brownfield

POLARIS

36' Peterson Gaff Schooner  
Steve & Connie McPherson

PRIVATEER

53' Crocker Schooner  
Robert M. Goss

LAZY LADY

34' Angelman Ketch  
Jack W. Stanley

CYBELE

48' 6" Alden Ketch  
Steve Flanagan

NEREID

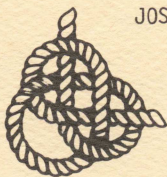
45' Ketch  
Howard R. O'Daniels

VIKING

32' Atkins Ketch  
Kay Russell

JOSS II

32' Møen Cutter  
Basil Lustig



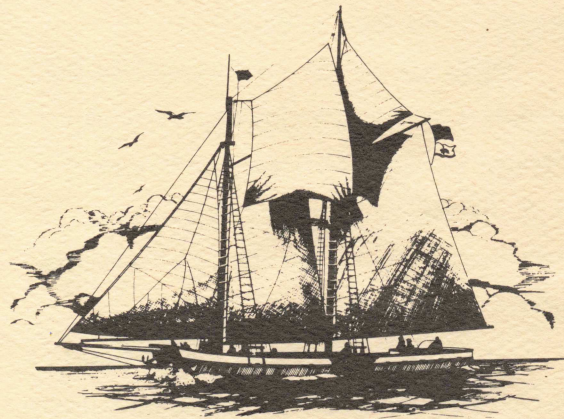
A SAD TALE

There once was an R Boat ALOHA  
With two speeds; slow and slowa.  
She started one day  
Her goal Mission Bay  
But finished the trip under tow-a.

Said the Skipper "She's fast"  
As he lived in the past  
And remembered the glorious day  
When ALOHA could sail  
And win without fail---  
ALOHA was Queen of the Bay.

I don't understand  
I'm not in the sand  
I'm not stuck in the muck and the mire.  
If I can't get a win,  
I'll have to give in.  
From racing I'll have to retire.

(reprinted from Loser's Digest)



FOR SALE

33' 1936 International One Design

"ALTAIR"  
Designed by Bjorn AAS  
Built in Norway  
6 bags of sails including a  
new North spinnaker & jib

\$5500

Skip Hanson 233-1762 day  
459-1415 eve



MD-1 Volvo Diesel with transmission

Runs good. \$1100

Bill Clark 297-2795