



AL HISLOP
 1890 LINBROOK
 SAN DIEGO, CA. 92111

Ancient Mariners Sailing Society
 P.O. Box 6484, San Diego
 California, 92106



SAN DIEGO BAY CALIFORNIA

From a Trigonometrical Survey
 under the direction of A. D. BACHE Superintendent of the
 SURVEY OF THE COAST OF THE UNITED STATES

Triangulation by R. D. CUTTS Asst.
 Topography by A. M. HARRISON Sub-Assistant
 Hydrography by the Party
 under the command of Comdr. JAMES ALDEN U.S.N. Asst.

Scale 40000

1857

NOVEMBER 1981

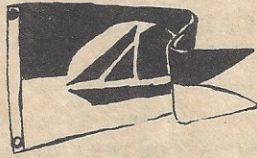
SAILING DIRECTIONS

Pt. Loma and the Coronado Islands form good landmarks for the entrance to the Bay. The Key which extends from Pilot Ten along the land to and three miles beyond Pt. Loma, will serve as a good guide in thick weather. From an entering the port may pass through the Key off the point, from the eastern edge of which starboard is 17° 30' N. all up with Pt. Loma, the bar having been crossed when there is 22 feet at mean low water and having seen half of the village on the Pt. Loma upon past Ballast Point, haul up and steer in that direction S.W. 2° W. S.E. 2° E. to the anchorage.

In heavy weather standing to the Eastward, do not approach the Zeevinga Shoal too much as it is very abrupt, but to the Westward where the water shoals very gradually the bar will be a sufficient guide. Between Ballast Pt. and the Village there is a shoal with 12 feet of water on it at mean low tide, but being out of the channel by it is no obstruction except in vessels of heavy draft working to windward. Beyond the Plaza the Channel is broadly marked at low water and its limits are more or less defined at any stage of the tide. In San Diego from the Northward, care must be taken not to mistake Pt. Loma for Pt. Loma, as they resemble each other, particularly when the weather is hazy. There is nothing more than a lost channel at the entrance of Pilot Bay, and that is unpracticable except in very smooth weather.



A L L B A T T R O S S



The ALBATROSS is the official publication of the ANCIENT MARINERS SAILING SOCIETY of San Diego.

ALBATROSS VOL. VIII no. 11 NOVEMBER 1981

Editor, Leslie Cabeen

Contributing Editors, Kathy & Lee Colby

BOARD MEMBERS - 1981

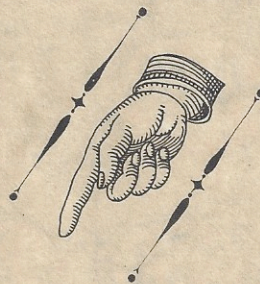
Commodore:	Tom Belair	452-7290
Vice Commodore:	Trudy Wood	452-3526
Secretary:	Leslie Cabeen	223-5111
Treasurer:	Chris Frost	223-9119 (UNLISTED)
Members:	Lee Colby	575-7505
	Kerry Hargraves	226-8416
	Joe Coppola	232-3414
	Jack Cabeen	223-5111
	John Frost	223-9119 (UNLISTED)



1981 CALENDER OF EVENTS

NOVEMBER OPEN

HALF PINT-O-RUM RACE.....Sat. Dec. 5



ALERT: BEACH PARTY INSTEAD OF USUAL INDOOR MEETING THIS MONTH. SEE "FROM THE BILGE"

FROM THE HELM

In September we all received an invitation from Southwestern Yacht Club to participate in their 18th Annual San Diego to Ensenada Race. It's unfortunate that it came so soon after our own annual Ensenada Race for Southwestern found very little interest shown by members of the AMSS. However, a few members did enter and were accepted. We then found out that along with the invitation (and we appreciate their interest in the AMSS) came the rules.

- #1. You must have active YSYRU sail numbers
- #2. If we do not have enough entries for a racing fleet (5) the boats must have a PHRF rating to be entered in another class.

The next time the AMSS receives an invitation like this I hope all of you would realize the thought, effort and intention that is part of the invitation and respond with more enthusiasm.

HAPPY THANKSGIVING

Thanks,
Tom

FROM THE BILGE

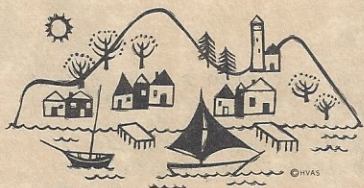
Post-Ensenada Beach Party

The Annual Post-Ensenada Beach Party is about to take place. This is a very post-Ensenada event and for some of us it's a post-Ensenada, post-Ensenada Beach Party. Since our September meeting was pre-Ensenada and entailed the Skipper's Meeting as well as the general meeting and the October meeting was a nominating meeting, this is the first available post-Ensenada date to have the Post-Ensenada Beach Party. Better Late Than Never, I hope.

The beach party will commence around 5:30 on November 5 just southwest of the small boat ramp on Shelter Island. Paul Plotts of Billy Bones Restaurant is bringing a keg of beer and some hotdogs. If you can, bring something to share with everybody else and we'll have a pot-luck beach party.

Sometime during the evening the results of our recent election will take place. I hope by now everyone has voted. There is a rumor that our Commodore is sailing off into the sunset and will miss this. Perhaps he knows something we don't. At any rate come down to the beach next Thursday for some suds and grub. Bring your jackets and blankets cuz it's bound to be chilly.

LEE



PEOPLE, PLACES & BOATS

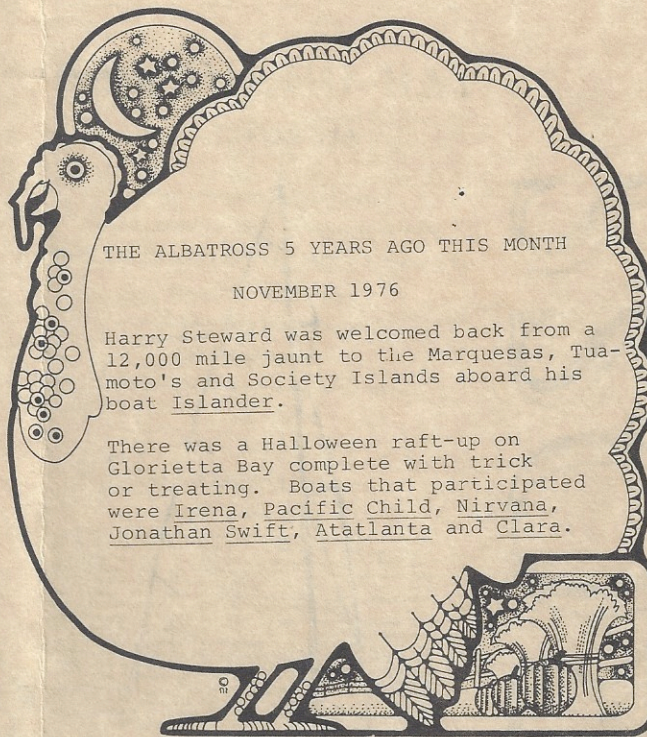
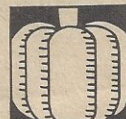
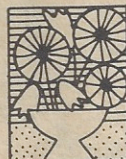
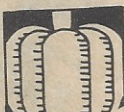
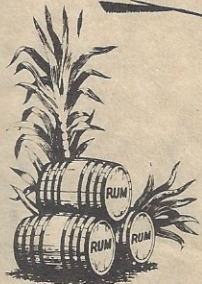
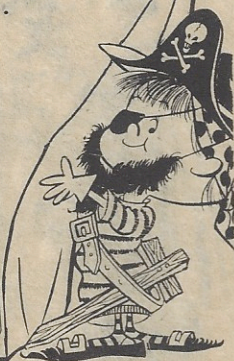
The November 1981 Cruising World has an article by Ewoud Bon, an active participant in our events over the last two years. Ewoud and his family sailed often and made several major improvements to their beautiful H28, Sea Cloud. The boat has now been sold and they have moved back to Europe after several years in San Diego.

The article in Cruising World is about self-steering and is a study and description of some experiments done after studying Joshua Slocum's self-steering system.

If you have any news about people or boats please call me (Leslie) or write to me at the P.O.Box. Let's get to know each other!

ANNUAL PINT O' RUM RACE

YES, IT'S TIME FOR OUR EVER POPULAR HALF PINT O' RUM RACE. If you haven't participated in this one before you are in for a treat. We will have the traditional LeMans start off the sandy beach on Shelter Island at noon on December 5. Entry fee is the traditional half pint of rum. The rest of the course will be revealed later. Come to the monthly meeting and watch for the next ALBATROSS for additional details.



THE ALBATROSS 5 YEARS AGO THIS MONTH
NOVEMBER 1976

Harry Steward was welcomed back from a 12,000 mile jaunt to the Marquesas, Tuamoto's and Society Islands aboard his boat Islander.

There was a Halloween raft-up on Glorietta Bay complete with trick or treating. Boats that participated were Irena, Pacific Child, Nirvana, Jonathan Swift, Atatlanta and Clara.

NEW MEMBERS

FAIRWIND

Owner: Timothy Bercovitz
4388 Hazelnut Avenue
Seal Beach, CA 90740

Fairwind is an Anglemans ketch built in Yokohama in 1966. She is a "Sea Spirit" with a semi-clipper bow, transom stern and actually finished this years San Diego to Ensenada Race.

SEA BRIG

Owner: Steve Johnson
2733 Shelter Island Dr.
#213
San Diego, CA 92106

Sea Brig is a Herreshoff ketch that has been in the AMSS before when owned by Paul Brower. She was designed in 1943, built in 1966 of double-planked Philippine mahogany.

HALCYON

Owner: Stanford Freeman
4712 Long Branch
San Diego, CA 92107

Halcyon is a double-ended 30 foot Anglemans built for cruising. She was built in 1954 in Costa Mesa.

BOAT OF THE MONTH

Andale has been in our club a little less than a year but her history goes way back. She is owned by Doug and Joan Smith. As many of you know Doug was one of the founders and previous Commodores of the AMSS.

Since 1904 only two yachts have won the Sir Thomas Lipton Challenge Cup three times in a row. Andale is one of these boats. Representing the Newport Harbor Yacht Club, Andale won the Lipton Cup in 1957, 1958 and 1959.

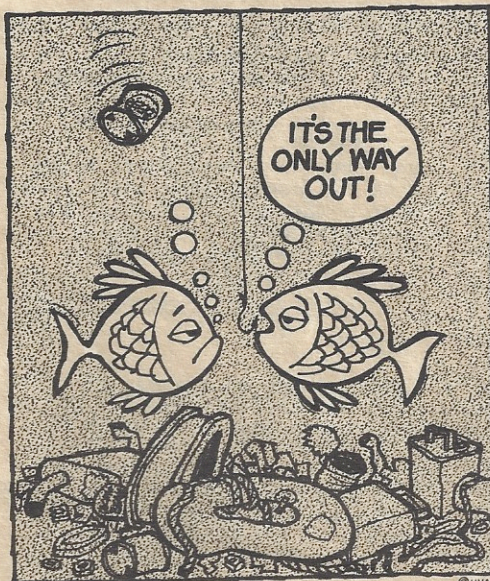
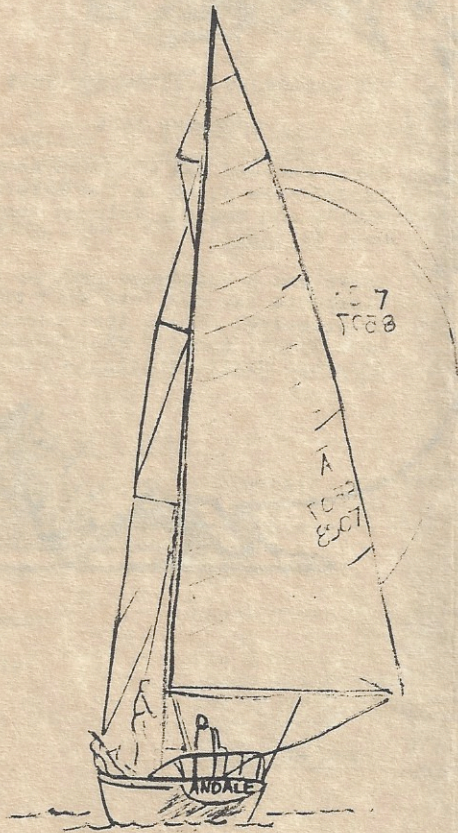
Andale was launched in 1952 at Newport Beach, California. In an article at that time Sea Magazine predicted that Andale would be the finest racer/cruiser ever built. Living up to that praise Andale won the prestigious St. Francis Yacht Club Challenge Cup on her maiden voyage.

Andale is a California 32' designed in 1937 by Nick Potter. Built at South Coast Shipyard for the owner of the yard in 1952, she measures 46' x 32' x 10½'. She draws 6½ feet and displaces 10 tons. Her spar measures 63' from the step and her boom is 22' long.

Having had excellent care for the first 20 years of her life, Andale fell into disrepair in about 1972.

While on charter in Mexico Andale was seized for smuggling drugs and her skipper and crew were jailed. Andale lay at anchor for many months at the port of Val-larta in Mexico awaiting the disposition of the charges against her owners. During this period she mysteriously sank and was on the bottom for about two weeks. Her engine, wiring and electronics were not properly taken care of after being raised and she rapidly fell into a state of disrepair.

Andale was eventually returned to the U.S. (a story that we'll have to ask Doug more about) and went through two more owners before being purchased by Doug and Joan.



Thank you