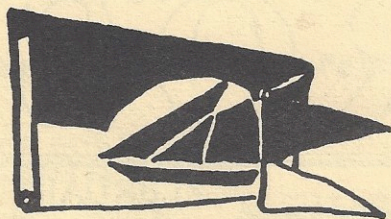


# ALBATROSS

ANCIENT MARINERS SAILING SOCIETY

FEBRUARY 1992





The Albatross is the official publication of the  
 Ancient Mariners Sailing Society.  
 Mailing Address:  
 P.O. Box 6484, San Diego, CA 92166  
 AMSS Ship-toShip VHF Common - Channel 68

*Editors* Rod Latimer/Diana Watson (619)287-9066

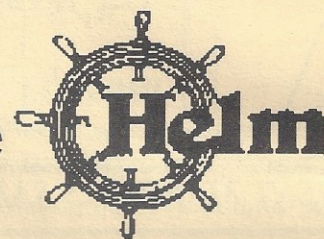
**Board of Directors - 1992**

<i>Commodore</i>	Jim Sutter	481-0102
<i>Vice Commodore</i>	Dick Winchip	298-1732
<i>Secretary</i>	Leslie Benton	226-1484
<i>Treasurer</i>	Diana Watson	573-8289
<i>Port Captain</i>	Kevin Thompson	222-9123
<i>Members of the Board</i>	Jon Bates	421-6700
	Vern Koepsel	297-7973
	Gerelyn Winchip	298-1732
	Dawn Miller	225-0297
<i>Staff Commodore</i>	Ann Kolls	569-5277

**1992 CALENDAR OF EVENTS**

√ Raft up at La Playa- End of 1991	Dec 31
√ General Meeting	Jan 2
General Meeting	Feb 6
Commodore's Cup Race and Raft Up	Feb 15, 16
General Meeting	Mar 5
April Fools Regatta and Raft Up	Mar 28, 29
General Meeting	Apr 2
Wooden Boat Center Festival	Apr 11, 12
Spring Swap Meet	May 2
General Meeting	May 7
Yesteryear Regatta	May 16, 17
General Meeting	June 4
General Meeting (picnic)	July 2
General Meeting	Aug 6
General Meeting	Sept 3
Petticoat & Iron Man Races	Sept 12, 13
Boat Show & Commodore's Ball CCYC	Sept 26
Homeward Bound Race	Sept 27
SWYC Ensenada Race	Oct 2,3,4
General Meeting-(2nd Thurs)	Oct 8
W.H.O.A. vs AMSS (Dana Cup)	Oct 17
General Meeting (Nominations)	Nov 5
Fall Swap Meet	Nov 14
General Meeting (Elections)	Dec 10
Parade/Escort Spanish Ships In	Dec 11
Half Pint O'Rum Race	Dec 12
Parade/Escort Spanish Ships Out	Dec 20
New Years' Eve Raftup - La Playa	Dec 31

**From the**



If you are like me, the Holidays are a dim memory, however our New Year's Eve raft-up is "frozen" in memory. It sure was a cold night!  
 Looking ahead to 1992.....several members have mentioned the possibility/desirability of increasing the number of wooden power boat members. This would be a significant change for a "sailing" society. However there are some fine ancient wooden power boats around. If we did this, we'd need to organize some powerboat type events. Please think about it. We'll get your ideas at the February meeting.  
 Regarding the upcoming Commodore's Cup, Doug Smith has agreed to convince all past Commodore's to race, so the turn out this year should be great.

Jim Sutter, Commodore

**SPINNAKER** -- A very large balloon-shaped sail frequently trailed in the water off the bow in a big bundle to slow the boat down.

**Committee Chairmen**

Membership	Peter Benton	226-1484
Handicap	Bill Clark	542-1229
	Al Hislop	565-9214
	C.F.Koehler	222-9051
Race	Jon Bates	421-6700
Cruising	Krista Champion	435-3643
	Doug Graves	226-3446
Trophies	Gabrielle Martin-Neff	223-6502
Historical	Jim Sutter	481-0102
Public Relations	Dick Winchip	298-1732
Bye-laws	Diana Watson	287-9066
Data Processing	Mark Szczecina	238-9770
T-Shirt Sales	CF Koehler	222-9051
Directory	Jim Sutter	481-0102
	Kathy Thompson	223-9123
Swap Meets		

Board meetings are held on the last Thursday of each month, a week before the General Meeting, at the South-western Yacht Club at 7.30pm.

## MEMBERSHIP

The AMSS Fleet of Flag members (January '92 - 69 members in good standing) now includes New Members Lee and Paula Washburn with their Rhodes Sloop **Majorca**. Welcome again from your many friends in the AMSS who remember your participation in early days of the society. **Majorca** was built in 1953 in Costa Mesa and was berthed for many years in Newport Beach where she was crewed by celebrities from Hollywood in jaunts to Catalina. Notables such as Flynn and Bogart sailed her in her halcyon days. Well done Paula and Lee - Play it again SAM!

**Inaugurating the 'Starship' Members.... Adelphi**, 55' classic Schock cutter built in 1911 and now owned by Chris and Krista Campion. A truly magnificent vessel and recipient of our first **AMSS Starship Membership** for giving back so much to our membership during the past year when **Adelphi's** 80th Birthday was so grandly celebrated. Thank you, Chris and Krista.

Will readers please ask any prospective members to call me for applications and joining routines at (619)226-1484 during the second dog watch (6pm to 8pm) or ALL daytime watches on weekends. We especially need some old gaff rigs which reckon they can sail to windward (such controversy...)!

Peter Benton, Membership

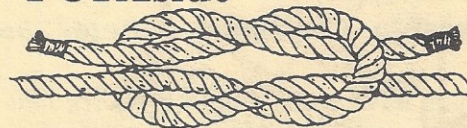
**FEBRUARY MEETING IS AT THE  
SOUTHWESTERN YACHT CLUB  
ON FEBRUARY 6 AT 7:30 PM**



### **Molly Sue's Return**

Ron Bodeen has edited the videos taken on his Kettenburg 50, **Molly Sue**, on her return voyage from Hawaii, including footage of a C-130 dropping various rescue items. Ron has an exciting 60 to 90 minute presentation. Don't miss it.

## PORTside



The New Year's Eve raftup seemed to be a success. The weather held, it was not too cold, and a good time was had by all. New Year's morning antics provided a very interesting method of slipping vessels out of the middle of a raft. . . enough to get the undivided attention of several members of a local yacht club. The upcoming Commodore's Cup event could prove to be equally interesting. In addition to participating in the race, I hope that many of you will be able to hang around for the overnighter at South Coronado Island. There will be a lot of racing activity out on the water that Saturday. With any luck the America's Cup events should be located to the North and West of our course. We hope to have good wind and a pleasant beam reach down to the Islands.

Kevin Thompson, Port Captain

---

## WOODENBOAT CENTER

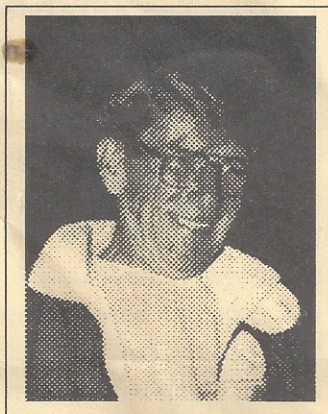
Plans for the long awaited WoodenBoat Center to be built at Koehler Kraft boatyard continue ahead. Preliminary discussions with members of the San Diego Port Commission have been well received, according to C.F. Koehler, chairman of the center's working committee. Detailed technical drawings of the center buildings are under development and are now pending review of the newest EPA regulations for the bay, due to be released shortly.

The committee has also started planning the 2nd Annual WoodenBoat Festival for April. This year's program promises to exceed last years roaringly successful two day event with even more beautiful vessels on display. This year's plans call for expansion of the educational seminars to a full time schedule each day with an assortment of subjects including small boat building demonstrations, finishing and varnishing techniques, sail maintenance, and many other subjects. There will also be presentations from other woodenboat organizations including small boat races, dingy races, and an expanded entertainment program. The other committee members are Commodore Jim Sutter, Bill Clark, Dick Winchip and Rod Latimer.

## MEET THE BOARD:

### **Membership Chairman - Peter Benton**

In case you have some suggestions for new members, you need to know who our new membership chairman is. Peter Benton is co-owner of **Bluewater II** a beautiful, 50' Alden Cutter, and **Santa Theresa of Avila**, shipped from Poole Harbour in England about 5 years ago. He and Leslie, his wife and AMSS Secretary, live on board **Bluewater** at Sun Harbor Marina.



### **Cruising Co-Captain - Jon Bates**

Jon Bates, living on board **Gamin**, a 1961 Sparkman and Stephens Sloop also at Sun Harbor Marina is one of the new AMSS cruising co-captains. Those of you at last month's meeting will have heard Jon and

Krista Campion give their Oscar winning rendition of this year's cruising calendar. It promises lots of fun, but if you have any ideas of your own, get in touch with Jon or Krista.



---

## SLIPS AVAILABLE

Koehler Kraft Boatyard has several slips available for wooden vessels up to 60 feet. Anyone looking for slip space in what will soon become the San Diego Wooden Boat Center, can call C.F. Koehler at 222-9051 between 0800-1700, Monday through Friday.

## SALE LOFT

### **ADELPHI**

55 ft. LOA, E.B. Shock fractional-rigged cutter, built in 1911 in Vancouver. Very good condition All reasonable offers considered. For details, call:

Chris Campion - (H) 435-3643

### **BEYOND**

37 ft. LOD Murray Peterson Coaster I Staysail Schooner. Cold molded plywood construction. Excellent condition. Equipped for extended cruising or local sailing. For details, call:

Max Beere - (W) 632-8582 / (H) 944-6045

---

## ISOLATION OR INSULATION?

We've been hearing a lot of skuttlebutt around the old rum keg regarding problems with shore power, rapid loss of zinc's, and electrolysis. It seems that, as usual, there are as many remedies as there are skippers, each different, each with another perspective. So, we decided we would like to get your ideas on this shocking subject. What are your ideas?

We need to hear from anyone who has attacked this problem. Everyone understands there is no magical solution to this problem, but your ideas may save someone a lot of money with zinc's and electrolysis damage to their boats. So, please take a couple of minutes some evening this week and jot down your problems, your solution (or attempted solution) and the results of your experiments. Send your note to the Editors, or call us with your comments in the evenings so we can include them in the next *Albatross* in our new section on vessel maintenance. Notes are fine. Include a name and phone number in case we have some questions. Of course, if you are an expert, Electronics Engineer, scientist, or wizard, we would really appreciate your comments. . . providing we can understand them.

**Commodore's Cup Skipper's Meeting: 9am, February 16th, at Koehler Kraft Boatyard**