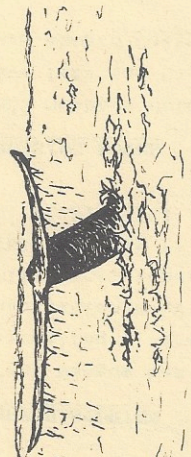
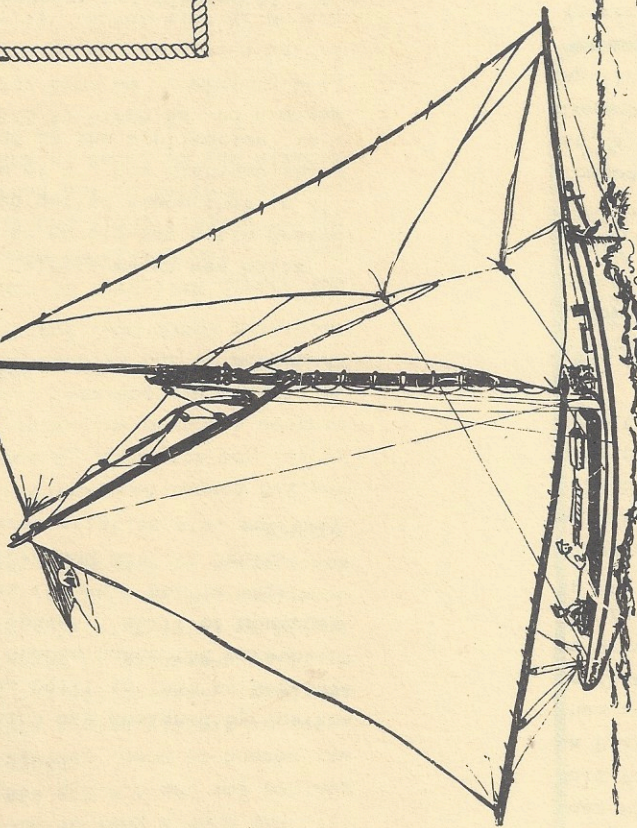




*Happy Holidays*



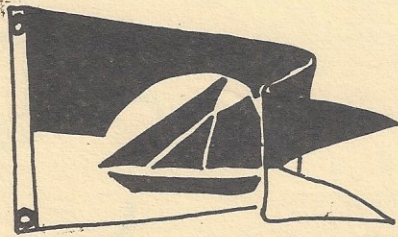
Ancient Mariners Sailing Society  
P.O. Box 6484, San Diego  
California, 92106



December, 1983

Ancient  
Mariners  
Sailing  
Society

# ALBATROSS



The Albatross is the official publication of the **ANCIENT MARINER'S SAILING SOCIETY** of San Diego.

ALBATROSS, DECEMBER 1983

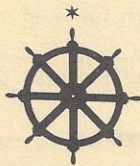
Editor - David Gibbs

BOARD MEMBERS - 1983

Commodore	Jack Cabeen	223-5111 292-4900
Vice Commodore	Rusty White	223-3624
Secretary	Robin Reynolds	299-6931
Treasurer	Dal Deweese	284-6301
Port Captain	Steve Johnson	222-1186
Historian	Irene Mangum	224-1254
Members at Large:		
	Joe Coppola	232-3414
	Bob Elder	486-3402
	Michael Eyton-Lloyd	223-4667
	Chris Goddard	566-2025

### 1983 CALENDAR OF EVENTS

Half Pint O' Rum Race .....December 3



### DECEMBER MEETING

The month of December marks the half way point for the Californian Project construction. Melburn Smith, designer and builder, will offer a slide presentation which you won't want to miss. Join us Dec 1, at 7:30 sharp for what should be a fascinating program.

### FROM THE HELM

1983 has been a year of good times and lessons learned for the A.M.S.S. Our events calendar was second to none, and splice the main brace crew, we finally have a roster and money in the bank! Respect for the Society within the maritime community is steadily increasing and should be further reinforced by our first ever donations, which will go to the Maritime Museum Association of San Diego and the Californian Project.

The 2nd Annual Nautical Film Festival was enjoyed by all who attended. A special thanks to Dall DeWeese and crew who spent untold hours to give us totally professional film presentations. Chuck and Jo Ann Mitchum provided delicious food from U-HOT-DOG; just right for a cold night.

Our annual Half Pint O' Rum Race will be held Dec. 3. Tom Belair is planning this not-to-be-missed event. Chris Goddard says the rum keg wood is swelled up and ready for use. Race details may be found in this Albatross issue.

Members of the Board of Directors are busy with 1984 planning. We need your help! You will notice a tentative calendar for 1984 has been placed in this issue. If you have any ideas, changes or opinions on the calendar, or any other aspect of the Society, call me or any of the other Board members before the Dec. 8th Board meeting.

At the November SDAYC meeting I was approached by several of the areas yacht clubs about AMSS becoming a member. I requested a copy of the SDAYC bylaws so that we may evaluate the values of membership in this organization.

One of the purposes of AMSS is to preserve sailing vessels of ancient vintage or classic design. As Commodore, I am looking forward to presenting the "Most Improved Boat" Award at our December meeting. See you there.

Rusty



PRESPECTIVE MEMBERS

William Bramhall  
c/o The Inn, P.O.Box 869  
Rancho Santa Fe, Ca 92067

William owns Circe which was designed by Sparkman and Stephens. She was built in 1950 by Neglinge Varvet of Stockholm, Sweden under the personal supervision of Rod Stephens. Built of Honduras mahogany over sawn oak frames. She is 56ft overall with a 12ft beam and 8ft 3in draft. Her distinguishing characteristics are, extremely sea kindly and fast.

NEW MEMBERS

Delores and John Foster  
P.O. Box 81941  
San Diego, Ca 92138

John and Delores own Culebra which was built by Del Cover in 1973 to an old Sam Rable design. She is a strip planked gaffed sloop that is 21' on deck. With a beam of 8', her distinguishing characteristic (listed in the application) is "fat".

NEW BOARD

The 1984 Board of Directors was elected at the November meeting. The new board will be installed at a joint meeting of the new and old boards Dec 8. Your new board members are:  
Commodore ..... Rusty White  
Vice Commodore ..... Chris Goddard  
Secretary ..... Jim Boulter  
Treasurer ..... Trudy Wood  
Port Captain ..... Dall DeWeese  
Directors at Large . Tom Belair  
                                  David Gibbs  
                                  Doug Graves  
                                  Jerry Newton

HALF PINT O' RUM RACE

The last and one of the most fun races of the year will be run on Saturday Dec. 3. The annual Half Pint O' Rum Race will again start at the La Playa Cove Beach with a race to your dinghies, then rowing out to the anchored yachts. It is then up anchor and race a course that will be given out at the skippers meeting prior to the race. The race ends with a flying finish at the Shelter Island Beach by dropping off someone to row or swim ashore and stop the time by taking a drink of rum from the keg. There will be awards for the first three places in both racing and cruising classes. For information come to the Dec 1 meeting or call Tom Belair.

1984 CALENDAR OF EVENTS

Below is the tentative 1984 calendar of events. The board members would like to have your input about the events and dates, any changes or additions. This is your club, let us hear from you.

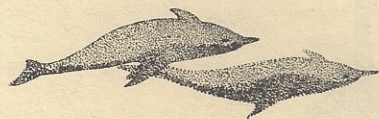
- Commodores Cup Race ..... January 14
- St.Valentines Day Dinghy Massacre. February 19
- Commodore's Brawl ..... February 25
- April Fools Regatta ..... April 8
- Mother's Day Cruise ..... May 6
- Yesteryear Regatta ..... June 10
- Pettycoat Regatta ..... July 21
- Ironman Race ..... July 22
- Ensenada Race ..... September 1-3
- Oceanside Harbor Days ..... October 13-14
- Film Festival ..... November 17
- Half Pint O' Rum ..... December 1

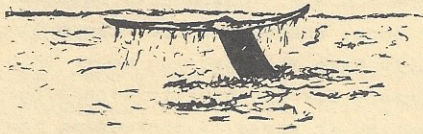
AMSS HISTORIAN

Irene Mangum has acted as AMSS historian, assembling a fine scrapbook of photos and information over the last two years. Other obligations require that she turn this responsibility over to someone else. Please call her at 224-1254 if you can help.

CRUISING NOTES

AMSS members Deidre Lindsey and Jim Martin have left San Diego recently, bound for Bora Bora aboard Calypso.





### THAR SHE BLOWS!

For those sailors ever seeking extra excitement, now is the time to hoist sails and set out in pursuit of the California gray whale. Sailing craft offer unequalled opportunities to view gray whales from close up as their 'non-motorized' movement causes little disturbance to the whale. Because of this a day spent whale watching is usually full of discovery and enjoyment.

No one knows for certain why the gray whale annually makes its pilgrimage from summer feeding grounds in the Arctic seas to winter breeding lagoons in Baja. But whatever the reason, the whales' migratory route brings them into southern California waters on a predictable schedule. Beginning mid-December the gray whales will be passing through our waters enroute to Baja for courting, mating and calving. The opportunities for sightings improve as the season progresses until about mid-February when the whales once again begin traveling north to summer feeding grounds.

Whales generally travel alone or in groups of two or three. However, groups of up to 12 are not uncommon, especially at the peak of migration.

A 'mid-size' gray whale is 35 to 50 feet long and weighs 20 to 40 tons. Females are slightly larger than males. A calf averages 15 feet and weighs about 1,500 pounds. Their cruising speed is two to four knots with a top speed of ten knots. They may spend as many as twenty hours a day traveling and cover up to a hundred miles. A normal dive depth is 120 feet and lasts about three to five minutes.

The requirements for whale watching are simple: binoculars, camera (if you want photos), friends, suitable refreshments and PATIENCE. The friends and refreshments should improve ones patience.

Your first indication of sighting a gray will probably be its spout or "blow", up to fifteen feet high. There will be three to five blows as a rule, 30 to 50 seconds apart before the whale "sounds" or duration dives. Generally three to five minutes will pass before it resurfaces.

Left behind is a glossy-slick area on the surface. Treasure this, as you are looking at a gray whale's "footprint". These slicks are created by the powerful thrust of the whale's "flukes" or tail, when swimming close to the surface. Such "footprints" are good indicators of a whale's approximate location.

Once spotted, approach whales from astern, overtaking gradually. Avoid joining other boats, as the noise and congestion may trigger evasive or defensive actions. If auxillary power is being used, do not rush up to the "pod" or group of whales. Approach slowly, at a constant speed, as this seems to cause less apprehension.

Boaters are also advised to know the laws which have been passed for both the whales and their protection. Among the common provisions are:

- 1) Boats must not be operated at speeds faster than the whale (or slowest whale when near a group) when paralleling and within 100 yards.
- 2) Boats must be operated at a constant speed when paralleling and within 100 yards, and must always let the whale lead.
- 3) Boats must never be used to separate a mother and calf.
- 4) Boats must never be used to herd or drive whales.

Failure to comply with these rules can be dangerous, as well as constituting harassment of the whales, a violation of law.

The waters off Point Loma seem to be a favored migration route. Here the whales often pass within a half of a mile of shore. So with the gray whales southward migration just beginning along our coast, whale watchers can look forward to a long enjoyable season.