



---

# Yesteryear Regatta

One of the West Coast's Premier Classic Boat Regattas

## Sailing Instructions

Saturday, May 7, 2011

Race Management by **SOUTHWESTERN YACHT CLUB**  
Social by **SAN DIEGO YACHT CLUB**

\*\*\*\* PRE-ENTRY REGISTRATION REQUIRED \*\*\*\*

AMSS Yesteryear Regatta Chairman: Greg Stewart (619) 723-3078  
SWYC Race Management Chairman: Linda Blanchard (619) 222-0438  
Principal Race Officer: Lynne Eddy

### 1. RULES

- 1.1 This regatta will be governed by *The Racing Rules of Sailing (RRS), 2009-2012*, the prescriptions of US Sailing, as adopted by AMSS, except as modified by these Sailing Instructions (SI's).
- 1.2 Yachts encountering non-racing vessels shall conform to the inland rules of the road. All yachts shall remain clear of, and give way to, deep draft vessels operating or at anchor or mooring in the designated channels and turning basins within the race course area. Failure to do so may result in disqualification.
- 1.3 **NAVAL PROTECTION ZONE:** The Naval Protection Zone is a 500 yard regulated area of water surrounding all US Naval Vessels. All vessels within 500 yards of a US Naval Vessel shall operate at the minimum speed necessary to maintain safe course and speed and shall proceed as directed by any official patrol. **NO VESSEL IS ALLOWED WITHIN 100 YARDS OF A US NAVAL VESSEL.** These zones are permanently in effect.

### 2. ENTRIES

- 2.1 Eligible yachts may enter by completing the 2011 AMSS Yesteryear Regatta Entry and Waiver Form. The signed Waiver Form is to be mailed or delivered to the AMSS Yesteryear Regatta Committee no later than 0900 Saturday, May 7, 2011 at San Diego Yacht Club (SDYC).
- 2.2 Eligible yachts shall complete their entry by picking up Race Packet at Registration 0800-0900, on Saturday, May 7, 2011, at SDYC and by checking in with the RC boat at the Starting Line at least 30 minutes prior to their started time. Yachts checking in shall stay clear of the starting line and shall display their Sail Number and Race Packet Number to the RC boat with RC acknowledgment.
- 2.3 There will be five (5) Classes as follows:

*Classic "A"*  
*Classic "B"*  
*Sloops & Cutters*  
*Split Rigs*  
*Pacific Class*

Spinnakers allowed in all Classes. Handicaps assume Spinnaker.

# *— Yesteryear Regatta —*

May 7, 2011

## Sailing Instructions

### 3. NOTICE TO COMPETITORS

Notices to competitors will be posted on the Race Committee bulletin board at the SDYC on the Spinnaker Room deck by 0900, May 7, 2011.

### 4. CHANGES IN SAILING INSTRUCTIONS

Any change in the Sailing Instructions, including a change in the schedule of the race, will be posted before 0900 May 7, 2011 on the Race Committee bulletin board at the SDYC on the Spinnaker Room deck. Changes to the SI's will also be broadcast by the RC on Channel 68 prior to the WARNING signal.

### 5. SIGNALS MADE AFLOAT

Code flags "L" over "C" means a change to the "SI's" will be broadcast from the RC boat five minutes prior to the WARNING SIGNAL.

### 6. SCHEDULE OF EVENTS

The first WARNING SIGNAL will be at 1150 unless modified by the RC and broadcast on Channel 68.

### 7. CLASS PENNANTS

A colored Pennant representing the Class each vessel is entered, as defined below, shall be flown from the stern of each vessel where it will be visible to the Race Committee.

<b><i>PENNANT Color</i></b>	<b><i>CLASS</i></b>
<i>Green</i>	<i>Classic "A"</i>
<i>Red</i>	<i>Classic "B"</i>
<i>Purple</i>	<i>Sloops &amp; Cutters</i>
<i>Yellow</i>	<i>Split Rigs</i>
<i>Blue</i>	<i>Pacific Class</i>

### 8. COURSE

There shall be one race course for all classes as shown on the attached "Course Diagram". The Course will not be shortened. This changes RRS 32. (Handicap Distance 12.86 nm)

Start/Finish Line (Near SD BUOY 17)  
SD BUOY 15 to Port  
SD BUOY 3 to Port  
TG-1 to Port  
SD BUOY 6 to Starboard  
SD BUOY 14 Starboard  
Start/Finish Line (Near SD BUOY 17)

### 9. MARKS

Start / Finish Line Near SD BUOY 17  
SD Buoy 15  
SD Buoy 3  
TG-1 - Navy Mooring Buoy 2.4 NM East South East of Zuniga Jetty approximately 32 39' N 117 10.72' W.  
SD Buoy 6  
SD Buoy 14

# *— Yesteryear Regatta —*

May 7, 2011

## Sailing Instructions

### 10. THE START

#### 10.1 Starting Line

The Starting Line shall be in the vicinity of SD BUOY 17. Yachts shall start between the Race Committee boat at the Starboard end and the Yellow inflatable pyramidal buoy at the Port end. (Leave RC boat to Starboard.)

#### 10.2 Starting Signals

- a. See Attachment "A" START ORDER SHEET for individual boat start times.
- b. Racing groups will be started as follows: (The visual signals aboard the RC boat control the timing; failure of a sound signal shall be disregarded.)

<u>Signal</u>	<u>Time</u>	<u>Signal</u>
WARNING	1150 (10 minutes prior to Group 1 start)	Yellow shape & 1 sound
PREPARATORY Group1	1155 (5 minutes prior to Group 1 start)	Blue shape & 1 sound
START Group 1	1200 (Start)	Red shape & 1 sound

- c. For Group 1, the PREPARATORY signal will be displayed one minute after the WARNING signal is dropped, and will be removed one minute before the START signal.
- d. For all other Group starts, the PREPARATORY signal Blue shape will be displayed 5 minutes before the START signal and removed one minute before the START Red shape is displayed.

### 11. RECALLS

The Race Committee Boat shall signal individual recalls (yachts over early) by one (1) horn signal and hoisting the code flag X-ray. There shall be no general recalls. THE RACE COMMITTEE WILL NOT HAIL INDIVIDUAL YACHTS STARTING PREMATURELY. IT IS THE RESPONSIBILITY OF EACH YACHT TO START PROPERLY. Each skipper shall be responsible for assessing whether they should return and restart properly. Yacht's that do not start correctly will be assessed a penalty per 14.1.

### 12. FINISH

12.1 The Finish Line shall be at the same location as the Starting Line. Yachts shall finish between the RC boat and an inflatable yellow pyramidal buoy, leaving the RC boat to Port. If possible, the RC will stay in the same location as the start.

12.2 If for any reason, the RC boat is not on station at the finish, yachts shall take their own time when they pass SD Buoy 17 to Starboard. Times so taken must be transmitted to the RC by radio on Channel 68, or to SWYC (619) 222-0438 as soon as possible.

### 13. PROTESTS

13.1 In keeping with the Corinthian yachting tradition of the Ancient Mariners Sailing Society, protests are discouraged.

13.2 In all cases, protests shall be communicated to the Race Committee immediately by radio and filed in writing using the appropriate Forms and submitted to the Race Committee at SDYC by 1800 hrs.

13.3 Protests will be heard at a time and place convenient to the Protest Chairman. The Protest Chairman will notify the skippers involved of time and place. All participants in the protest must be present.

# *— Yesteryear Regatta —*

May 7, 2011

## Sailing Instructions

### 14. PENALTIES

14.1 PREMATURE STARTS: A ten-minute penalty shall be assessed for premature starts, unless the yachts restart properly. Yachts over early *in excess of two (2) minutes* before their start time shall be disqualified, unless they restart properly.

14.2 MISSED MARKS: A vessel that misses a mark on the course, and does not return to re-round the mark, shall be disqualified. Note: **Vessels must “unwind the string” too properly re-round a mark.**

### 15. SCORING

Finish times will be corrected with positive or negative adjustment as noted on the handicap sheet.

### 16. RETIREMENT

A yacht that retires from the race must notify the Race Committee before leaving the course or call SWYC (619) 222-0438 as soon as possible. immediately after arriving ashore. Failure to do so will result in disqualification from this Regatta.

### 17. COMMUNICATIONS

The Race Committee shall monitor Channel 68.

### 18. AWARDS

Take-home awards will be given to the top three (3) finishers in each of the Classes listed in S.I. 2.3 at the after race gathering at the San Diego Yacht Club Pavilion.

Winners of the following AMSS Perpetual Trophies will be recognized for yachts that meet AMSS yacht requirements:

Dingus Perpetual Trophy	First to finish
Reliance Perpetual Trophy	First overall on Corrected Time
Herreshoff Perpetual Trophy	First Herreshoff to finish on Correct Time
International Rule Perpetual Trophy	First International Rule yacht on Corrected Time
Sparkman & Stephens Perpetual Trophy	First S&S yacht on Corrected Time
Luders 16 Perpetual Trophy	First L16 to finish
Pacific Class Perpetual Trophy	First PC to finish
Kettenburg Perpetual Trophy	First non-PC Kettenburg Yacht on Corrected Time
Turtle Trophy	Last boat to finish on Elapsed Time

### 19. SOCIAL

Post Race activities will be held at the San Diego Yacht Club immediately following racing. Beverages and Food will be available for purchase. Yachts are invited to moor at the SDYC front dock Friday night for pre race and Saturday night for post race activities. Contact Joe Ravnich to arrange at (619) 221-8400.

# - Yesteryear Regatta -

May 7, 2011

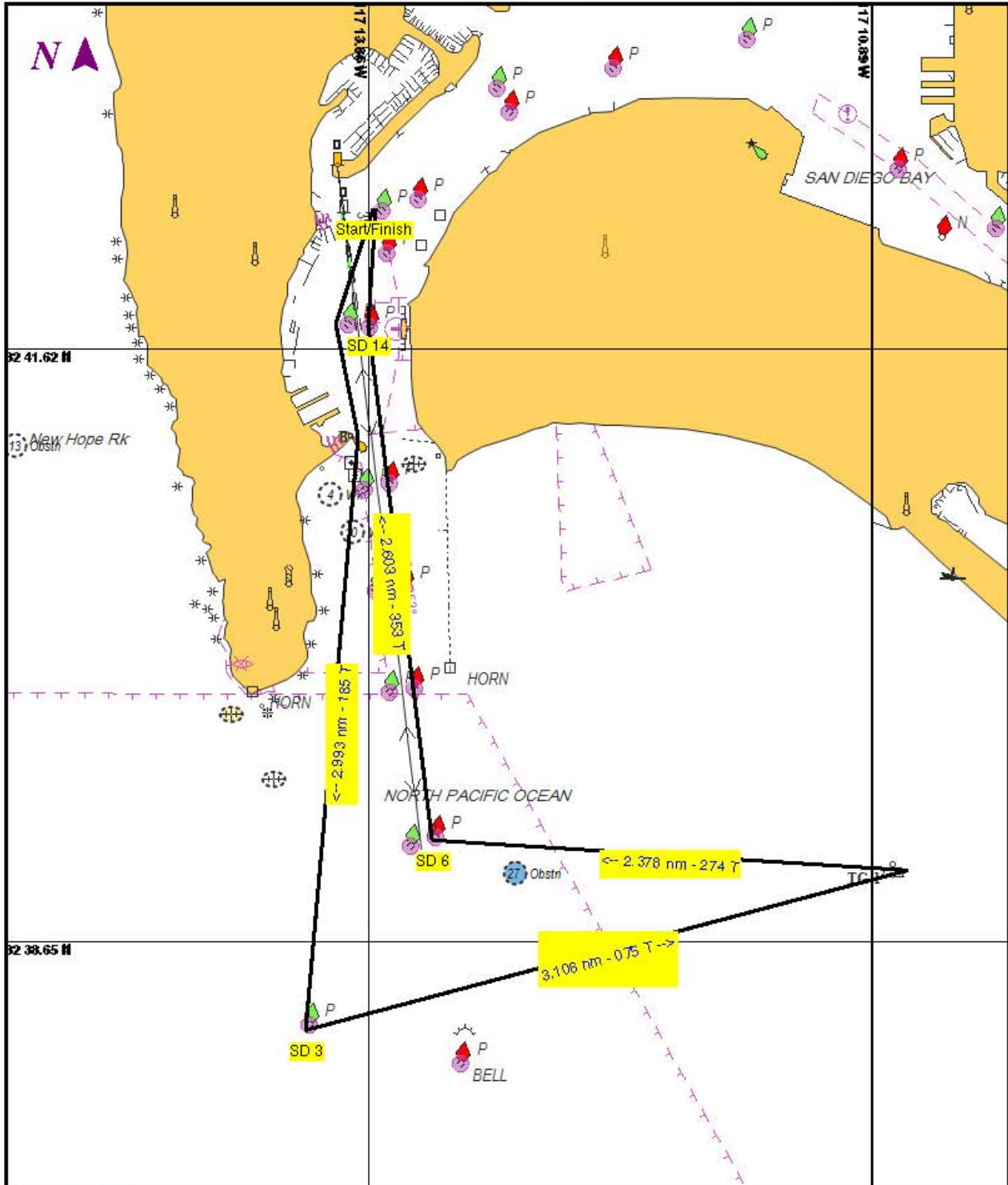
## Sailing Instructions

## Course Diagram

**NOBELTEC**  
Admiral

4/7/2011  
Page 1

**APPROACHES TO SAN DIEGO BAY - 1 : 43,800**  
(MAX Pro World Charts - vector format) Chart #18765A - Depth Units: Feet



DO NOT USE FOR NAVIGATION  
SOME NAVIGATION AIDS MAY NOT BE SHOWN

Nobeltec software™ - Copyright © 1995-2011 Nobeltec (1-800-948-2877)